

Spare parts list

 Bosch Rexroth AG
 Service Hydraulics
 Glockeraustrasse 4
 89275 Elchingen
 Germany
 +49 (0)7308/82-2126

 Part No.: R902208983
 Drawing no.: R909712549
 Designation: A11VLO190EP2Z/11R-NSD12K07H

Status of version: 7/2014

 Date: 19.08.2014
 Page: 1

Pos.	Part No.	Designation	Quantity	
1	R902013668	ROTARY GROUP	1 ST	L
2	R902106708	PORT PLATE WITH ACCESSORIES	1 ST	L
3	R902094321	REGULATOR	1 ST	L
4	R902007450	CONTROL	1 ST	L
5	R902007456	CONTROL, HYDRAULIC	1 ST	L
7	R902018765	PUMP SUPPORT PLATE	1 ST	L
10	R902120458	HOUSING	1 ST	
11	R902132714	JOINT PIN	4 ST	
12	R909449866	IMPELLER, RIGHT-HAND ROTAT.	1 ST	
20	R909921095	THREADED PIN	2 ST	D
22	R909153328	SEALING NUT	2 ST	D
24	R909153364	LOCKING SCREW	4 ST	D
25	R909084762	SOCKET-HEAD SCREW	4 ST	
26	R902601050	O-RING	1 ST	D
27	R909153861	LOCKING SCREW	2 ST	D
28	R909153512	CLAMPING PIN	2 ST	
29	R909083362	RETAINING RING	2 ST	

L = Assembly group D = Sealing element

Security notice

All service and repair work shall be executed by Bosch Rexroth AG or specially trained personnel. Bosch Rexroth AG does not cover defects caused by incorrect installation, faulty maintenance or repair from the buyer's side or third parties.

The data specified above only serve to describe the product. No statements concerning a certain condition or suitability for a certain application can be derived from our information. The given information does not release the user from the obligation of own judgement and verification. It must be remembered that our products are subject to a natural process of wear and aging.

Spare parts list

Part No.: R902208983
Drawing no.: R909712549
Designation: A11VLO190EP2Z/11R-NSD12K07H

Bosch Rexroth AG
Service Hydraulics
Glockeraustrasse 4
89275 Elchingen
Germany
+49 (0)7308/82-2126

Status of version: 7/2014

Date: 19.08.2014

Page: 2

98	R902095611	SEAL KIT,COMPLETE	1 ST	L
----	------------	-------------------	------	---

L = Assembly group D = Sealing element

Security notice

All service and repair work shall be executed by Bosch Rexroth AG or specially trained personnel. Bosch Rexroth AG does not cover defects caused by incorrect installation, faulty maintenance or repair from the buyer's side or third parties.

The data specified above only serve to describe the product. No statements concerning a certain condition or suitability for a certain application can be derived from our information. The given information does not release the user from the obligation of own judgement and verification. It must be remembered that our products are subject to a natural process of wear and aging.

Firmensitz / Headquarters: Stuttgart, Registrierung / Registration: Amtsgericht Stuttgart HRB 23192

Vorstand / Executive Board: Dr. Karl Tragl (Vorsitzender / President), Dr. Georg Hanen; Reiner Leopold-Büttner; Dr. Stefan Spindler

Vorsitzender des Aufsichtsrats / Chairman of the Supervisory Board: Dr. Siegfried Dais

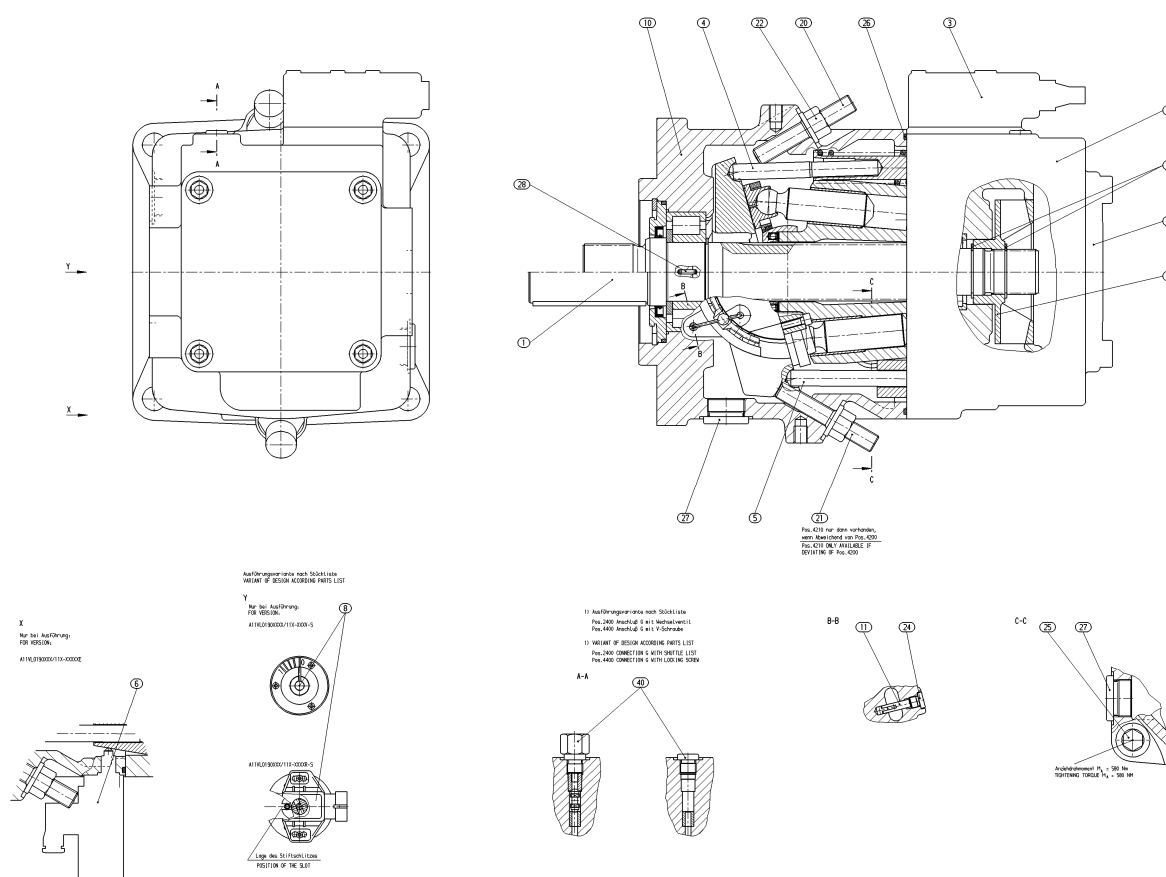
Spare parts list

Part No.: R902208983
Drawing no.: R909712549
Designation: A11VLO190EP2Z/11R-NSD12K07H

Bosch Rexroth AG
Service Hydraulics
Glockeraustrasse 4
89275 Elchingen
Germany
+49 (0)7308/82-2126

Status of version: 7/2014

Date: 19.08.2014
Page: 3



L = Assembly group D = Sealing element

Security notice

All service and repair work shall be executed by Bosch Rexroth AG or specially trained personnel. Bosch Rexroth AG does not cover defects caused by incorrect installation, faulty maintenance or repair from the buyer's side or third parties.

The data specified above only serve to describe the product. No statements concerning a certain condition or suitability for a certain application can be derived from our information. The given information does not release the user from the obligation of own judgement and verification. It must be remembered that our products are subject to a natural process of wear and aging.

Firmensitz / Headquarters: Stuttgart, Registrierung / Registration: Amtsgericht Stuttgart HRB 23192

Vorstand / Executive Board: Dr. Karl Tragl (Vorsitzender / President), Dr. Georg Hanen; Reiner Leopold-Büttner; Dr. Stefan Spindler

Vorsitzender des Aufsichtsrats / Chairman of the Supervisory Board: Dr. Siegfried Dais

Spare parts list

 Bosch Rexroth AG
 Service Hydraulics
 Glockeraustrasse 4
 89275 Elchingen
 Germany
 +49 (0)7308/82-2126

 Part No.: R902013668
 Drawing no.: R902007713
 Designation: ROTARY GROUP

Status of version: 7/2014

 Date: 19.08.2014
 Page: 4

Pos.	Part No.	Designation	Quantity	
1	R902448912	ROTARY GROUP, HYDR. SECTION	1 ST	L
2	R902400563	CONTROL PLATE	1 ST	
12	R909921186	CRADLE	1 ST	
14	R902013666	DRIVE SHAFT	1 ST	
16	R909922179	COVER	1 ST	D
17	R909403549	WIRE	4 ST	
23	R909443548	ROLLER	4 ST	
26	R902066600	BEARING LINER (PAIR)	1 ST	
30	R902007712	RETAINING SEGMENT	2 ST	
31	R909157194	PLAIN ROLLER BEARING	1 ST	
32	R902600957	CRADLE BEARING ASSEMBLY (SET)	1 ST	
36	R909150122	RETAINING RING	1 ST	
37	R909152143	RETAINING RING	1 ST	
38	R909831662	SHAFT SEAL RING	1 ST	D
39	R909152647	O-RING	1 ST	D
47	R909831331	SOCKET-HEAD SCREW	4 ST	
98	R902002459	SEAL KIT DRIVE SHAFT	1 ST	L

L = Assembly group D = Sealing element

Security notice

All service and repair work shall be executed by Bosch Rexroth AG or specially trained personnel. Bosch Rexroth AG does not cover defects caused by incorrect installation, faulty maintenance or repair from the buyer's side or third parties.

The data specified above only serve to describe the product. No statements concerning a certain condition or suitability for a certain application can be derived from our information. The given information does not release the user from the obligation of own judgement and verification. It must be remembered that our products are subject to a natural process of wear and aging.

Spare parts list

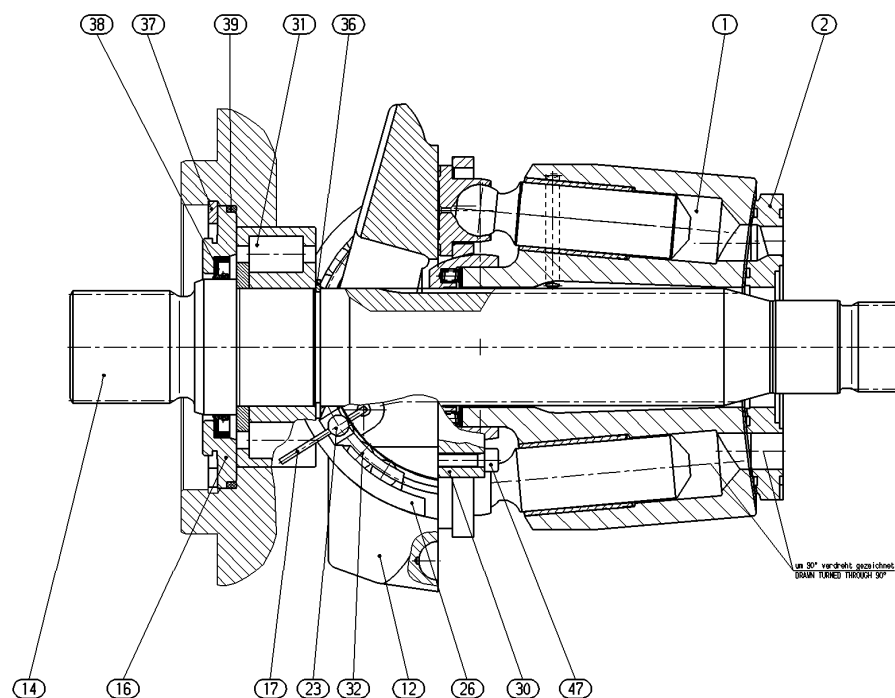
Part No.: R902013668
Drawing no.: R902007713
Designation: ROTARY GROUP

Bosch Rexroth AG
Service Hydraulics
Glockeraustrasse 4
89275 Elchingen
Germany
+49 (0)7308/82-2126

Status of version: 7/2014

Date: 19.08.2014

Page: 5



L = Assembly group D = Sealing element

Security notice

All service and repair work shall be executed by Bosch Rexroth AG or specially trained personnel. Bosch Rexroth AG does not cover defects caused by incorrect installation, faulty maintenance or repair from the buyer's side or third parties.

The data specified above only serve to describe the product. No statements concerning a certain condition or suitability for a certain application can be derived from our information. The given information does not release the user from the obligation of own judgement and verification. It must be remembered that our products are subject to a natural process of wear and aging.

Firmensitz / Headquarters: Stuttgart, Registrierung / Registration: Amtsgericht Stuttgart HRB 23192

Vorstand / Executive Board: Dr. Karl Tragl (Vorsitzender / President), Dr. Georg Hanen; Reiner Leopold-Büttner; Dr. Stefan Spindler

Vorsitzender des Aufsichtsrats / Chairman of the Supervisory Board: Dr. Siegfried Dais

Spare parts list

Part No.: R902448912
Drawing no.: R902448913
Designation: ROTARY GROUP, HYDR. SECTION

Bosch Rexroth AG
Service Hydraulics
Glockeraustrasse 4
89275 Elchingen
Germany
+49 (0)7308/82-2126

Status of version: 7/2014

Date: 19.08.2014
Page: 6

Pos.	Part No.	Designation	Quantity
1	R902438137	PISTON-SLIPPER PAD	9 ST
3	R902439442	CYLINDER WITH BUSH	1 ST
5	R902439616	RETAINING PLATE	1 ST
6	R902439437	RETAINING BALL	1 ST
9	R902400545	SHIM	2 ST
10	R902400546	SHIM	2 ST
14	R902400547	SPRING	20 ST

L = Assembly group D = Sealing element

Security notice

All service and repair work shall be executed by Bosch Rexroth AG or specially trained personnel. Bosch Rexroth AG does not cover defects caused by incorrect installation, faulty maintenance or repair from the buyer's side or third parties.

The data specified above only serve to describe the product. No statements concerning a certain condition or suitability for a certain application can be derived from our information. The given information does not release the user from the obligation of own judgement and verification. It must be remembered that our products are subject to a natural process of wear and aging.

Spare parts list

Part No.: R902002459
Designation: SEAL KIT DRIVE SHAFT

Bosch Rexroth AG
Service Hydraulics
Glockeraustrasse 4
89275 Elchingen
Germany
+49 (0)7308/82-2126

Status of version: 7/2014

Date: 19.08.2014

Page: 7

Pos.	Part No.	Designation	Quantity	
1	R909831662	SHAFT SEAL RING	1 ST	D
2	R909152647	O-RING	1 ST	D
3	R909087850	O-RING	1 ST	D

L = Assembly group D = Sealing element

Security notice

All service and repair work shall be executed by Bosch Rexroth AG or specially trained personnel. Bosch Rexroth AG does not cover defects caused by incorrect installation, faulty maintenance or repair from the buyer's side or third parties.

The data specified above only serve to describe the product. No statements concerning a certain condition or suitability for a certain application can be derived from our information. The given information does not release the user from the obligation of own judgement and verification. It must be remembered that our products are subject to a natural process of wear and aging.

Spare parts list

Part No.: R902106708
 Drawing no.: R902106712
 Designation: PORT PLATE WITH ACCESSORIES

Bosch Rexroth AG
 Service Hydraulics
 Glockeraustrasse 4
 89275 Elchingen
 Germany
 +49 (0)7308/82-2126

Status of version: 7/2014

Date: 19.08.2014
Page: 8

Pos.	Part No.	Designation	Quantity	
1	R909151979	LOCKING SCREW	1 ST	D
2	R902106502	PORT PLATE, RIGHT-HAND ROTAT.	1 ST	
10	R909156745	PLAIN ROLLER BEARING	1 ST	
11	R909831318	DOUBLE BREAK-OFF PLUG	7 ST	D
13	R909087753	CYLINDER PIN	2 ST	
14	R909830529	CYLINDER PIN	1 ST	
19	R909151692	LOCKING SCREW	2 ST	D
20	R909154024	LOCKING SCREW	1 ST	D
21	R909157345	ORIFICE	1 ST	D
22	R909157343	ORIFICE	1 ST	D
98	R902002468	SEAL KIT PORT PLATE	1 ST	L

L = Assembly group D = Sealing element

Security notice

All service and repair work shall be executed by Bosch Rexroth AG or specially trained personnel. Bosch Rexroth AG does not cover defects caused by incorrect installation, faulty maintenance or repair from the buyer's side or third parties.

The data specified above only serve to describe the product. No statements concerning a certain condition or suitability for a certain application can be derived from our information. The given information does not release the user from the obligation of own judgement and verification. It must be remembered that our products are subject to a natural process of wear and aging.

Spare parts list

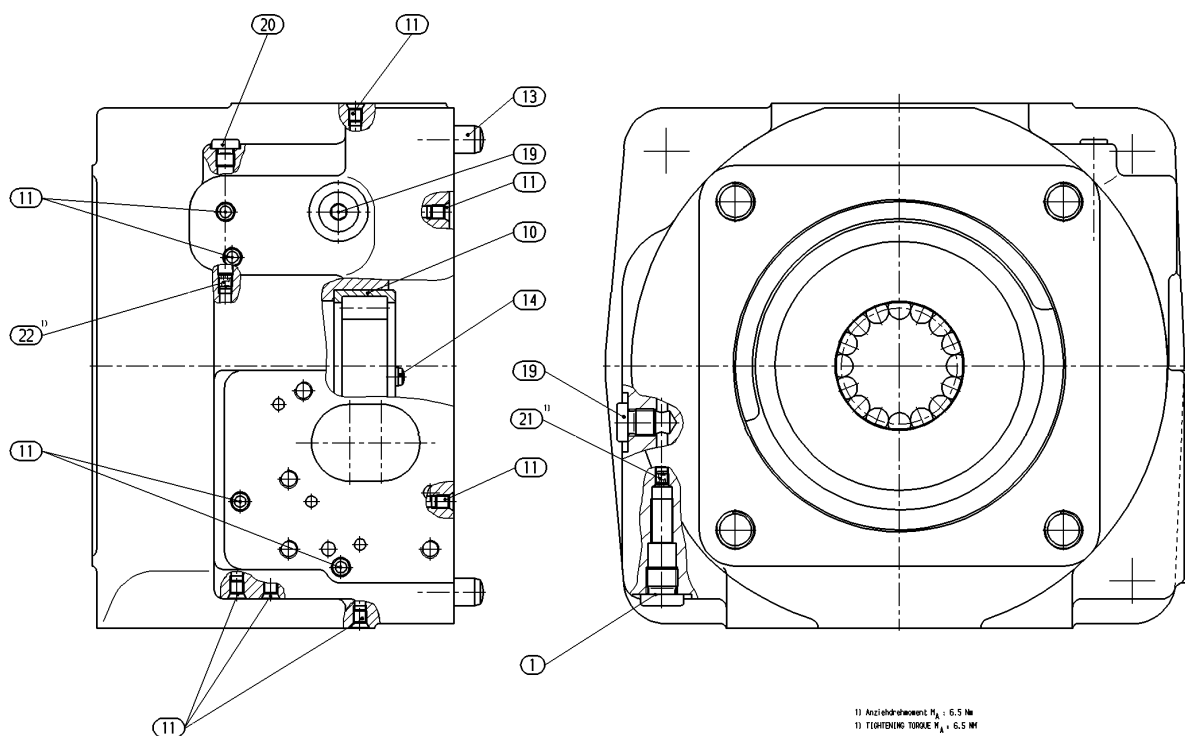
Part No.: R902106708
Drawing no.: R902106712
Designation: PORT PLATE WITH ACCESSORIES

Bosch Rexroth AG
Service Hydraulics
Glockeraustrasse 4
89275 Elchingen
Germany
+49 (0)7308/82-2126

Status of version: 7/2014

Date: 19.08.2014

Page: 9



L = Assembly group D = Sealing element

Security notice

All service and repair work shall be executed by Bosch Rexroth AG or specially trained personnel. Bosch Rexroth AG does not cover defects caused by incorrect installation, faulty maintenance or repair from the buyer's side or third parties.

The data specified above only serve to describe the product. No statements concerning a certain condition or suitability for a certain application can be derived from our information. The given information does not release the user from the obligation of own judgement and verification. It must be remembered that our products are subject to a natural process of wear and aging.

Firmensitz / Headquarters: Stuttgart, Registrierung / Registration: Amtsgericht Stuttgart HRB 23192

Vorstand / Executive Board: Dr. Karl Tragl (Vorsitzender / President), Dr. Georg Hanen; Reiner Leopold-Büttner; Dr. Stefan Spindler

Vorsitzender des Aufsichtsrats / Chairman of the Supervisory Board: Dr. Siegfried Dais

Spare parts list

Part No.: R902002468
Drawing no.: R902095512
Designation: SEAL KIT PORT PLATE

Bosch Rexroth AG
Service Hydraulics
Glockeraustrasse 4
89275 Elchingen
Germany
+49 (0)7308/82-2126

Status of version: 7/2014

Date: 19.08.2014

Page: 10

Pos.	Part No.	Designation	Quantity	
1	R902601050	O-RING	1 ST	D
2	R902600656	O-RING	1 ST	D
3	R909157512	O-RING	3 ST	D
4	R909157351	O-RING	1 ST	D
5	R909085947	O-RING	1 ST	D
6	R900012467	SEAL RING	1 ST	D

L = Assembly group D = Sealing element

Security notice

All service and repair work shall be executed by Bosch Rexroth AG or specially trained personnel. Bosch Rexroth AG does not cover defects caused by incorrect installation, faulty maintenance or repair from the buyer's side or third parties.

The data specified above only serve to describe the product. No statements concerning a certain condition or suitability for a certain application can be derived from our information. The given information does not release the user from the obligation of own judgement and verification. It must be remembered that our products are subject to a natural process of wear and aging.

Spare parts list

Part No.: R902094321
 Drawing no.: R902064779
 Designation: REGULATOR

Bosch Rexroth AG
 Service Hydraulics
 Glockeraustrasse 4
 89275 Elchingen
 Germany
 +49 (0)7308/82-2126

Status of version: 7/2014

Date: 19.08.2014
Page: 11

Pos.	Part No.	Designation	Quantity	
2	R902007798	CONTROL ELEMENT	1 ST	L
5	R902064445	CONTROL ELEMENT	1 ST	L
10	R902129257	CONTROL HOUSING	1 ST	
20	R909449599	BOLT	1 ST	
50	R909083045	SOCKET-HEAD SCREW	5 ST	
51	R909087751	CYLINDER PIN	2 ST	
52	R909831318	DOUBLE BREAK-OFF PLUG	8 ST	D
53	R909157512	O-RING	3 ST	D
54	R902600656	O-RING	1 ST	D
98	R902002479	SEAL KIT REGULATOR	1 ST	L

L = Assembly group D = Sealing element

Security notice

All service and repair work shall be executed by Bosch Rexroth AG or specially trained personnel. Bosch Rexroth AG does not cover defects caused by incorrect installation, faulty maintenance or repair from the buyer's side or third parties.

The data specified above only serve to describe the product. No statements concerning a certain condition or suitability for a certain application can be derived from our information. The given information does not release the user from the obligation of own judgement and verification. It must be remembered that our products are subject to a natural process of wear and aging.

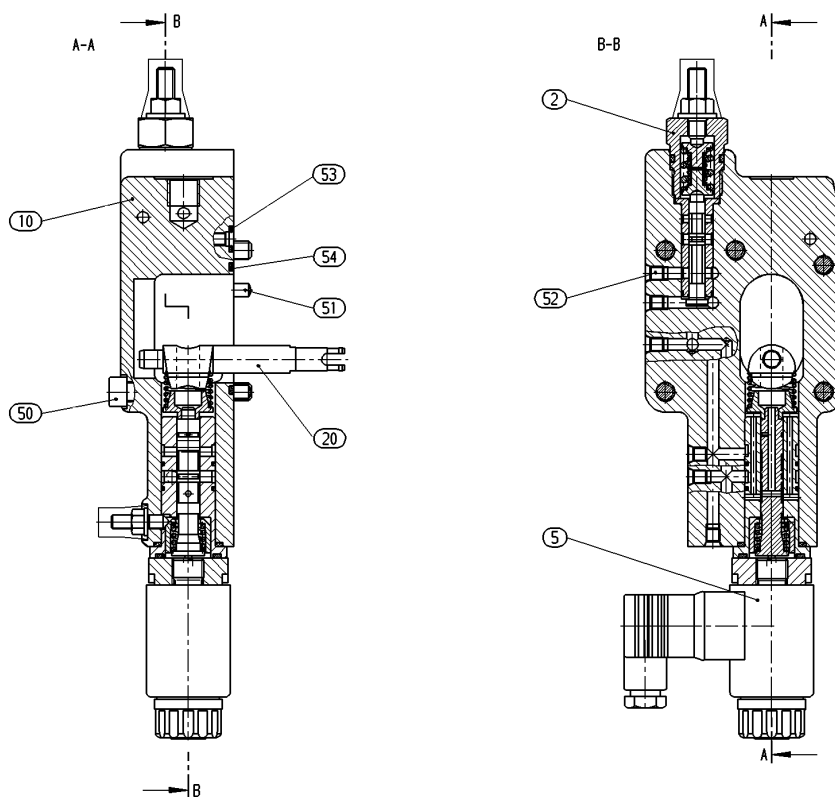
Spare parts list

Part No.: R902094321
Drawing no.: R902064779
Designation: REGULATOR

Bosch Rexroth AG
Service Hydraulics
Glockeraustrasse 4
89275 Elchingen
Germany
+49 (0)7308/82-2126

Status of version: 7/2014

Date: 19.08.2014
Page: 12



L = Assembly group D = Sealing element

Security notice

All service and repair work shall be executed by Bosch Rexroth AG or specially trained personnel. Bosch Rexroth AG does not cover defects caused by incorrect installation, faulty maintenance or repair from the buyer's side or third parties.

The data specified above only serve to describe the product. No statements concerning a certain condition or suitability for a certain application can be derived from our information. The given information does not release the user from the obligation of own judgement and verification. It must be remembered that our products are subject to a natural process of wear and aging.

Firmensitz / Headquarters: Stuttgart, Registrierung / Registration: Amtsgericht Stuttgart HRB 23192

Vorstand / Executive Board: Dr. Karl Tragl (Vorsitzender / President), Dr. Georg Hanen; Reiner Leipold-Büttner; Dr. Stefan Spindler

Vorsitzender des Aufsichtsrats / Chairman of the Supervisory Board: Dr. Siegfried Dais

Spare parts list

 Bosch Rexroth AG
 Service Hydraulics
 Glockeraustrasse 4
 89275 Elchingen
 Germany
 +49 (0)7308/82-2126

 Part No.: R902007798
 Drawing no.: R902007797
 Designation: CONTROL ELEMENT

Status of version: 7/2014

 Date: 19.08.2014
 Page: 13

Pos.	Part No.	Designation	Quantity	
1	R902033700	LOCKING SCREW	1 ST	
2	R902007318	CONTROL PISTON	1 ST	
3	R909436839	SPRING BOLT	2 ST	
5	R909436394	PRESSURE SPRING	1 ST	
6	R909436395	PRESSURE SPRING	1 ST	
8	R909444953	THREADED PIN	1 ST	
9	R902007358	CONTROL BUSH	1 ST	
11	R909152707	SEALING NUT	1 ST	D
12	R909083758	O-RING	1 ST	D

L = Assembly group D = Sealing element

Security notice

All service and repair work shall be executed by Bosch Rexroth AG or specially trained personnel. Bosch Rexroth AG does not cover defects caused by incorrect installation, faulty maintenance or repair from the buyer's side or third parties.

The data specified above only serve to describe the product. No statements concerning a certain condition or suitability for a certain application can be derived from our information. The given information does not release the user from the obligation of own judgement and verification. It must be remembered that our products are subject to a natural process of wear and aging.

Firmensitz / Headquarters: Stuttgart, Registrierung / Registration: Amtsgericht Stuttgart HRB 23192

Vorstand / Executive Board: Dr. Karl Tragl (Vorsitzender / President), Dr. Georg Hanen; Reiner Leipold-Büttner; Dr. Stefan Spindler

Vorsitzender des Aufsichtsrats / Chairman of the Supervisory Board: Dr. Siegfried Dais

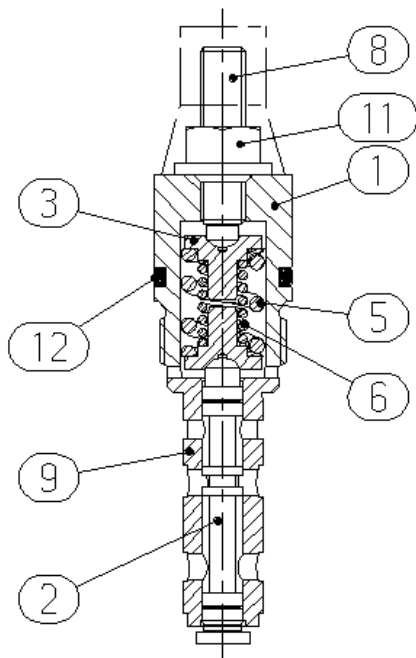
Spare parts list

Part No.: R902007798
Drawing no.: R902007797
Designation: CONTROL ELEMENT

Bosch Rexroth AG
Service Hydraulics
Glockeraustrasse 4
89275 Elchingen
Germany
+49 (0)7308/82-2126

Status of version: 7/2014

Date: 19.08.2014
Page: 14



L = Assembly group D = Sealing element

Security notice

All service and repair work shall be executed by Bosch Rexroth AG or specially trained personnel. Bosch Rexroth AG does not cover defects caused by incorrect installation, faulty maintenance or repair from the buyer's side or third parties.

The data specified above only serve to describe the product. No statements concerning a certain condition or suitability for a certain application can be derived from our information. The given information does not release the user from the obligation of own judgement and verification. It must be remembered that our products are subject to a natural process of wear and aging.

Firmensitz / Headquarters: Stuttgart, Registrierung / Registration: Amtsgericht Stuttgart HRB 23192

Vorstand / Executive Board: Dr. Karl Tragl (Vorsitzender / President), Dr. Georg Hanen; Reiner Leipold-Büttner; Dr. Stefan Spindler

Vorsitzender des Aufsichtsrats / Chairman of the Supervisory Board: Dr. Siegfried Dais

Spare parts list

 Bosch Rexroth AG
 Service Hydraulics
 Glockeraustrasse 4
 89275 Elchingen
 Germany
 +49 (0)7308/82-2126

 Part No.: R902064445
 Drawing no.: R902064446
 Designation: CONTROL ELEMENT

Status of version: 7/2014

 Date: 19.08.2014
 Page: 15

Pos.	Part No.	Designation	Quantity	
1	R902064447	CONTROL BUSH	1 ST	
2	R902105207	CONTROL PISTON	1 ST	
3	R902005735	ADJUSTING BUSHING	1 ST	D
4	R909443280	SPRING COLLAR	1 ST	
5	R909440876	PRESSURE SPRING	1 ST	
6	R909449773	PRESSURE SPRING	1 ST	
7	R902055741	INTERMEDIATE PART	1 ST	
13	R909083763	O-RING	1 ST	D
14	R909083761	O-RING	1 ST	D
15	R909083004	SOCKET-HEAD SCREW	4 ST	
16	R902601678	STEEL SEALING RING	2 ST	D
17	R909153284	THREADED PIN	1 ST	
18	R909152425	SEALING NUT	1 ST	D
19	R913022795	PLUG SOCKET	1 ST	
20	R902603434	PROPORTIONAL SOLENOID	1 ST	

L = Assembly group D = Sealing element

Security notice

All service and repair work shall be executed by Bosch Rexroth AG or specially trained personnel. Bosch Rexroth AG does not cover defects caused by incorrect installation, faulty maintenance or repair from the buyer's side or third parties.

The data specified above only serve to describe the product. No statements concerning a certain condition or suitability for a certain application can be derived from our information. The given information does not release the user from the obligation of own judgement and verification. It must be remembered that our products are subject to a natural process of wear and aging.

Spare parts list

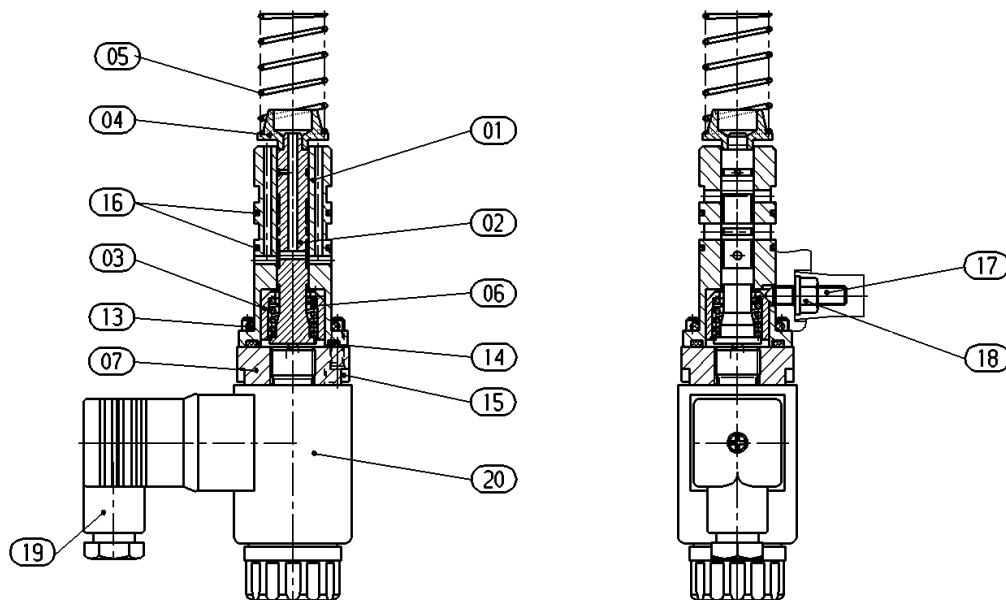
Part No.: R902064445
Drawing no.: R902064446
Designation: CONTROL ELEMENT

Bosch Rexroth AG
Service Hydraulics
Glockeraustrasse 4
89275 Elchingen
Germany
+49 (0)7308/82-2126

Status of version: 7/2014

Date: 19.08.2014

Page: 16



L = Assembly group D = Sealing element

Security notice

All service and repair work shall be executed by Bosch Rexroth AG or specially trained personnel. Bosch Rexroth AG does not cover defects caused by incorrect installation, faulty maintenance or repair from the buyer's side or third parties.

The data specified above only serve to describe the product. No statements concerning a certain condition or suitability for a certain application can be derived from our information. The given information does not release the user from the obligation of own judgement and verification. It must be remembered that our products are subject to a natural process of wear and aging.

Firmensitz / Headquarters: Stuttgart, Registrierung / Registration: Amtsgericht Stuttgart HRB 23192

Vorstand / Executive Board: Dr. Karl Tragl (Vorsitzender / President), Dr. Georg Hanen; Reiner Leopold-Büttner; Dr. Stefan Spindler

Vorsitzender des Aufsichtsrats / Chairman of the Supervisory Board: Dr. Siegfried Dais

Spare parts list

Part No.: R902002479
 Drawing no.: R902095517
 Designation: SEAL KIT REGULATOR

Bosch Rexroth AG
 Service Hydraulics
 Glockeraustrasse 4
 89275 Elchingen
 Germany
 +49 (0)7308/82-2126

Status of version: 7/2014

Date: 19.08.2014
Page: 17

Pos.	Part No.	Designation	Quantity	
1	R902600656	O-RING	1 ST	D
2	R909831385	QUAD BONDET RING	3 ST	D
3	R909083758	O-RING	2 ST	D
4	R909152707	SEALING NUT	2 ST	D
6	R909152425	SEALING NUT	1 ST	D
7	R909086517	O-RING	1 ST	D
8	R909830129	O-RING	1 ST	D
9	R909083764	O-RING	1 ST	D
10	R909083763	O-RING	1 ST	D
11	R909083761	O-RING	1 ST	D
13	R902602257	SEAL RING	1 ST	
14	R902602578	O-RING	1 ST	

L = Assembly group D = Sealing element

Security notice

All service and repair work shall be executed by Bosch Rexroth AG or specially trained personnel. Bosch Rexroth AG does not cover defects caused by incorrect installation, faulty maintenance or repair from the buyer's side or third parties.

The data specified above only serve to describe the product. No statements concerning a certain condition or suitability for a certain application can be derived from our information. The given information does not release the user from the obligation of own judgement and verification. It must be remembered that our products are subject to a natural process of wear and aging.

Spare parts list

Part No.: R902007450
Drawing no.: R902007451
Designation: CONTROL

Bosch Rexroth AG
Service Hydraulics
Glockeraustrasse 4
89275 Elchingen
Germany
+49 (0)7308/82-2126

Status of version: 7/2014

Date: 19.08.2014
Page: 18

Pos.	Part No.	Designation	Quantity
1	R902007452	POSITIONING PISTON	1 ST
2	R902027503	ROD	1 ST
2	R902007455	ROD	1 ST
2	R902027504	ROD	1 ST
2	R902007453	ROD	1 ST
3	R909436881	PRESSURE SPRING	1 ST
5	R902025365	BUSH	1 ST

L = Assembly group D = Sealing element

Security notice

All service and repair work shall be executed by Bosch Rexroth AG or specially trained personnel. Bosch Rexroth AG does not cover defects caused by incorrect installation, faulty maintenance or repair from the buyer's side or third parties.

The data specified above only serve to describe the product. No statements concerning a certain condition or suitability for a certain application can be derived from our information. The given information does not release the user from the obligation of own judgement and verification. It must be remembered that our products are subject to a natural process of wear and aging.

Spare parts list

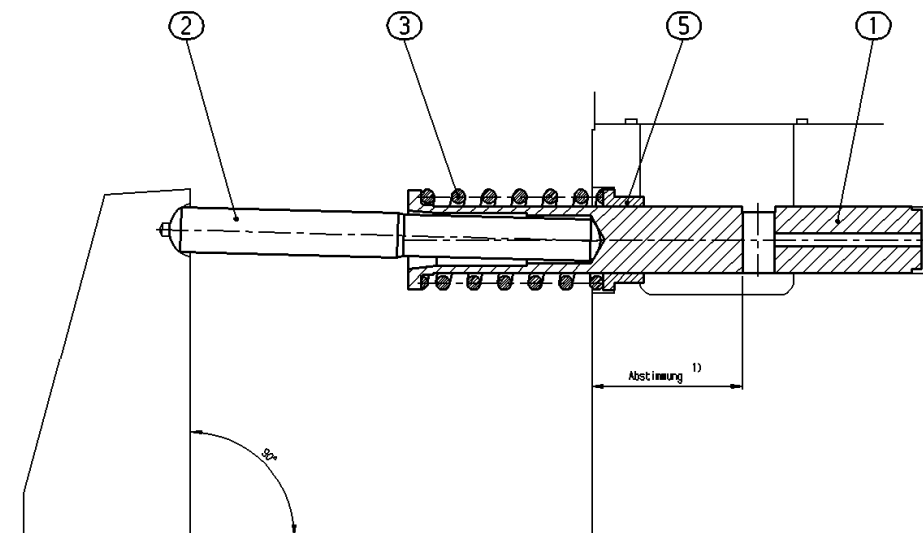
Part No.: R902007450
Drawing no.: R902007451
Designation: CONTROL

Bosch Rexroth AG
Service Hydraulics
Glockeraustrasse 4
89275 Elchingen
Germany
+49 (0)7308/82-2126

Status of version: 7/2014

Date: 19.08.2014

Page: 19



1) siehe Maßblatt

L = Assembly group D = Sealing element

Security notice

All service and repair work shall be executed by Bosch Rexroth AG or specially trained personnel. Bosch Rexroth AG does not cover defects caused by incorrect installation, faulty maintenance or repair from the buyer's side or third parties.

The data specified above only serve to describe the product. No statements concerning a certain condition or suitability for a certain application can be derived from our information. The given information does not release the user from the obligation of own judgement and verification. It must be remembered that our products are subject to a natural process of wear and aging.

Firmensitz / Headquarters: Stuttgart, Registrierung / Registration: Amtsgericht Stuttgart HRB 23192

Vorstand / Executive Board: Dr. Karl Tragl (Vorsitzender / President), Dr. Georg Hanen; Reiner Leopold-Büttner; Dr. Stefan Spindler

Vorsitzender des Aufsichtsrats / Chairman of the Supervisory Board: Dr. Siegfried Dais

Spare parts list

Part No.: R902007456
Drawing no.: R909730307
Designation: CONTROL, HYDRAULIC

Bosch Rexroth AG
Service Hydraulics
Glockeraustrasse 4
89275 Elchingen
Germany
+49 (0)7308/82-2126

Status of version: 7/2014

Date: 19.08.2014
Page: 20

Pos.	Part No.	Designation	Quantity
1	R902007949	RETURN PISTON	1 ST
2	R902007458	RETURN ROD	1 ST
2	R902007459	RETURN ROD	1 ST
2	R902028019	RETURN ROD	1 ST
2	R902007457	RETURN ROD	1 ST
3	R909431493	PRESSURE SPRING	1 ST

L = Assembly group D = Sealing element

Security notice

All service and repair work shall be executed by Bosch Rexroth AG or specially trained personnel. Bosch Rexroth AG does not cover defects caused by incorrect installation, faulty maintenance or repair from the buyer's side or third parties.

The data specified above only serve to describe the product. No statements concerning a certain condition or suitability for a certain application can be derived from our information. The given information does not release the user from the obligation of own judgement and verification. It must be remembered that our products are subject to a natural process of wear and aging.

Spare parts list

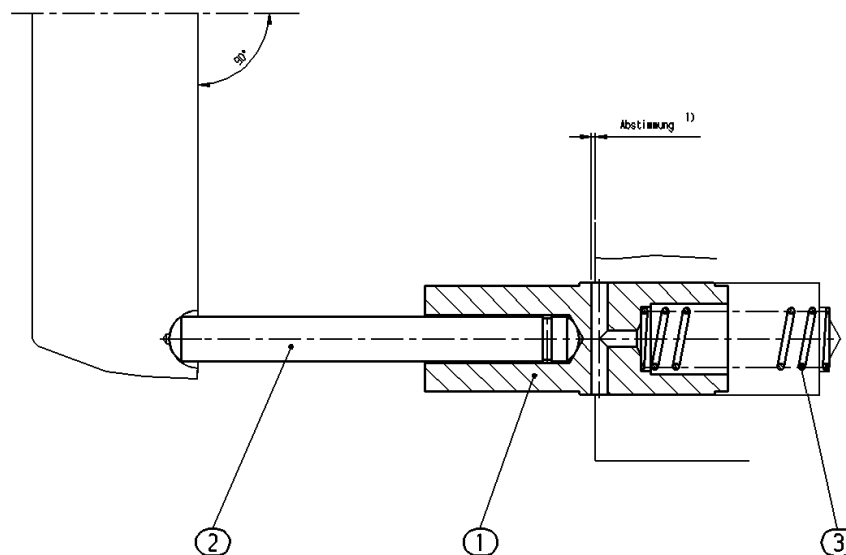
Part No.: R902007456
Drawing no.: R909730307
Designation: CONTROL, HYDRAULIC

Bosch Rexroth AG
Service Hydraulics
Glockeraustrasse 4
89275 Elchingen
Germany
+49 (0)7308/82-2126

Status of version: 7/2014

Date: 19.08.2014

Page: 21



1) siehe Hilfsblatt

L = Assembly group D = Sealing element

Security notice

All service and repair work shall be executed by Bosch Rexroth AG or specially trained personnel. Bosch Rexroth AG does not cover defects caused by incorrect installation, faulty maintenance or repair from the buyer's side or third parties.

The data specified above only serve to describe the product. No statements concerning a certain condition or suitability for a certain application can be derived from our information. The given information does not release the user from the obligation of own judgement and verification. It must be remembered that our products are subject to a natural process of wear and aging.

Firmensitz / Headquarters: Stuttgart, Registrierung / Registration: Amtsgericht Stuttgart HRB 23192

Vorstand / Executive Board: Dr. Karl Tragl (Vorsitzender / President), Dr. Georg Hanen; Reiner Leopold-Büttner; Dr. Stefan Spindler

Vorsitzender des Aufsichtsrats / Chairman of the Supervisory Board: Dr. Siegfried Dais

Spare parts list

Part No.: R902018765
 Drawing no.: R902099596
 Designation: PUMP SUPPORT PLATE

Bosch Rexroth AG
 Service Hydraulics
 Glockeraustrasse 4
 89275 Elchingen
 Germany
 +49 (0)7308/82-2126

Status of version: 7/2014

Date: 19.08.2014
Page: 22

Pos.	Part No.	Designation	Quantity	
1	R902014641	FLANGE	1 ST	
2	R909436837	CLUTCH HUB	1 ST	
10	R909157351	O-RING	1 ST	D
11	R913002054	O-RING	1 ST	D
12	R909083211	SOCKET-HEAD SCREW	4 ST	
98	R902095515	SEAL KIT PUMP SUPPORT PLATE	1 ST	L

L = Assembly group D = Sealing element

Security notice

All service and repair work shall be executed by Bosch Rexroth AG or specially trained personnel. Bosch Rexroth AG does not cover defects caused by incorrect installation, faulty maintenance or repair from the buyer's side or third parties.

The data specified above only serve to describe the product. No statements concerning a certain condition or suitability for a certain application can be derived from our information. The given information does not release the user from the obligation of own judgement and verification. It must be remembered that our products are subject to a natural process of wear and aging.

Spare parts list

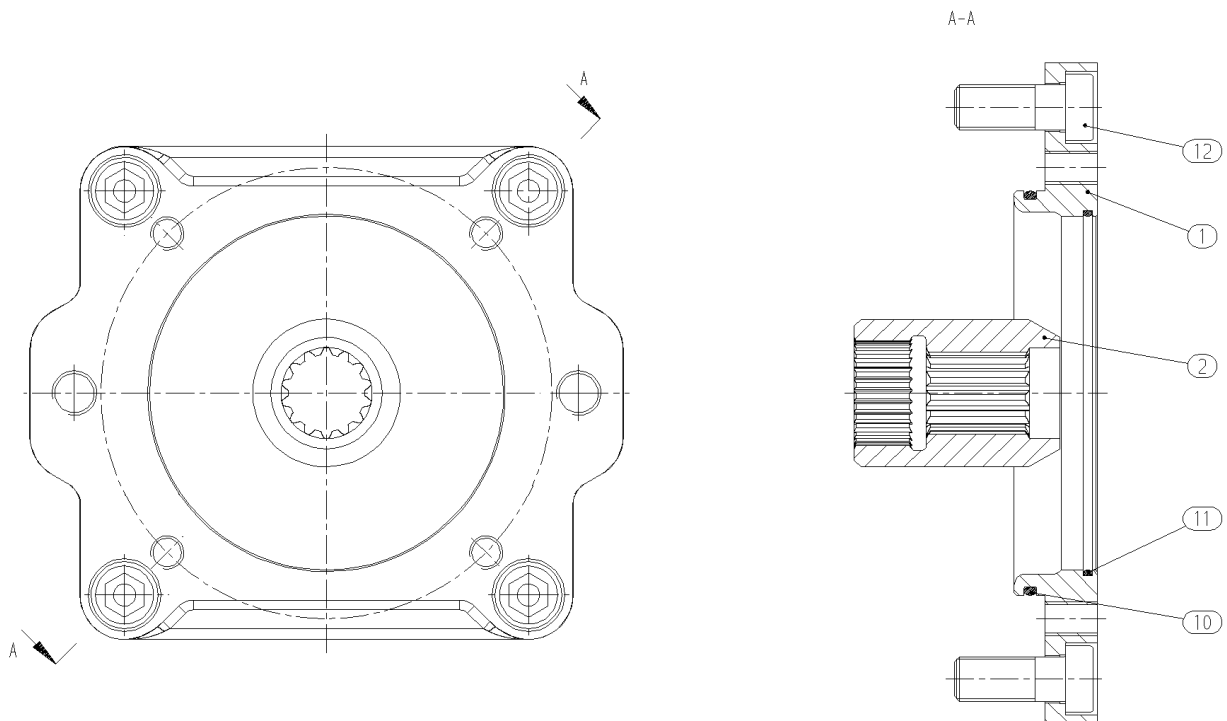
Part No.: R902018765
Drawing no.: R902099596
Designation: PUMP SUPPORT PLATE

Bosch Rexroth AG
Service Hydraulics
Glockeraustrasse 4
89275 Elchingen
Germany
+49 (0)7308/82-2126

Status of version: 7/2014

Date: 19.08.2014

Page: 23



L = Assembly group D = Sealing element

Security notice

All service and repair work shall be executed by Bosch Rexroth AG or specially trained personnel. Bosch Rexroth AG does not cover defects caused by incorrect installation, faulty maintenance or repair from the buyer's side or third parties.

The data specified above only serve to describe the product. No statements concerning a certain condition or suitability for a certain application can be derived from our information. The given information does not release the user from the obligation of own judgement and verification. It must be remembered that our products are subject to a natural process of wear and aging.

Firmensitz / Headquarters: Stuttgart, Registrierung / Registration: Amtsgericht Stuttgart HRB 23192

Vorstand / Executive Board: Dr. Karl Tragl (Vorsitzender / President), Dr. Georg Hanen; Reiner Leopold-Büttner; Dr. Stefan Spindler

Vorsitzender des Aufsichtsrats / Chairman of the Supervisory Board: Dr. Siegfried Dais

Spare parts list

Part No.: R902095515
 Drawing no.: R902095554
 Designation: SEAL KIT PUMP SUPPORT PLATE

Bosch Rexroth AG
 Service Hydraulics
 Glockeraustrasse 4
 89275 Elchingen
 Germany
 +49 (0)7308/82-2126

Status of version: 7/2014

Date: 19.08.2014
Page: 24

Pos.	Part No.	Designation	Quantity	
1	R909157351	O-RING	1 ST	D
2	R909157997	O-RING	1 ST	D
3	R909154589	O-RING	1 ST	D
4	R913002054	O-RING	1 ST	D
5	R909083832	O-RING	2 ST	D
6	R909086482	O-RING	1 ST	D
7	R909083831	O-RING	1 ST	D

L = Assembly group D = Sealing element

Security notice

All service and repair work shall be executed by Bosch Rexroth AG or specially trained personnel. Bosch Rexroth AG does not cover defects caused by incorrect installation, faulty maintenance or repair from the buyer's side or third parties.

The data specified above only serve to describe the product. No statements concerning a certain condition or suitability for a certain application can be derived from our information. The given information does not release the user from the obligation of own judgement and verification. It must be remembered that our products are subject to a natural process of wear and aging.

Spare parts list

Part No.: R902095611
Designation: SEAL KIT,COMPLETE

Bosch Rexroth AG
Service Hydraulics
Glockeraustrasse 4
89275 Elchingen
Germany
+49 (0)7308/82-2126

Status of version: 7/2014

Date: 19.08.2014

Page: 25

Pos.	Part No.	Designation	Quantity	
1	R902002459	SEAL KIT DRIVE SHAFT	1 ST	L
2	R902002468	SEAL KIT PORT PLATE	1 ST	L
3	R902002479	SEAL KIT REGULATOR	1 ST	L
4	R902095515	SEAL KIT PUMP SUPPORT PLATE	1 ST	L

L = Assembly group D = Sealing element

Security notice

All service and repair work shall be executed by Bosch Rexroth AG or specially trained personnel. Bosch Rexroth AG does not cover defects caused by incorrect installation, faulty maintenance or repair from the buyer's side or third parties.

The data specified above only serve to describe the product. No statements concerning a certain condition or suitability for a certain application can be derived from our information. The given information does not release the user from the obligation of own judgement and verification. It must be remembered that our products are subject to a natural process of wear and aging.

Spare parts list

Part No.: R902002459
Designation: SEAL KIT DRIVE SHAFT

Bosch Rexroth AG
Service Hydraulics
Glockeraustrasse 4
89275 Elchingen
Germany
+49 (0)7308/82-2126

Status of version: 7/2014

Date: 19.08.2014

Page: 26

Pos.	Part No.	Designation	Quantity	
1	R909831662	SHAFT SEAL RING	1 ST	D
2	R909152647	O-RING	1 ST	D
3	R909087850	O-RING	1 ST	D

L = Assembly group D = Sealing element

Security notice

All service and repair work shall be executed by Bosch Rexroth AG or specially trained personnel. Bosch Rexroth AG does not cover defects caused by incorrect installation, faulty maintenance or repair from the buyer's side or third parties.

The data specified above only serve to describe the product. No statements concerning a certain condition or suitability for a certain application can be derived from our information. The given information does not release the user from the obligation of own judgement and verification. It must be remembered that our products are subject to a natural process of wear and aging.

Spare parts list

Part No.: R902002468
Drawing no.: R902095512
Designation: SEAL KIT PORT PLATE

Bosch Rexroth AG
Service Hydraulics
Glockeraustrasse 4
89275 Elchingen
Germany
+49 (0)7308/82-2126

Status of version: 7/2014

Date: 19.08.2014
Page: 27

Pos.	Part No.	Designation	Quantity	
1	R902601050	O-RING	1 ST	D
2	R902600656	O-RING	1 ST	D
3	R909157512	O-RING	3 ST	D
4	R909157351	O-RING	1 ST	D
5	R909085947	O-RING	1 ST	D
6	R900012467	SEAL RING	1 ST	D

L = Assembly group D = Sealing element

Security notice

All service and repair work shall be executed by Bosch Rexroth AG or specially trained personnel. Bosch Rexroth AG does not cover defects caused by incorrect installation, faulty maintenance or repair from the buyer's side or third parties.

The data specified above only serve to describe the product. No statements concerning a certain condition or suitability for a certain application can be derived from our information. The given information does not release the user from the obligation of own judgement and verification. It must be remembered that our products are subject to a natural process of wear and aging.

Spare parts list

Part No.: R902002479
 Drawing no.: R902095517
 Designation: SEAL KIT REGULATOR

Bosch Rexroth AG
 Service Hydraulics
 Glockeraustrasse 4
 89275 Elchingen
 Germany
 +49 (0)7308/82-2126

Status of version: 7/2014

Date: 19.08.2014
Page: 28

Pos.	Part No.	Designation	Quantity	
1	R902600656	O-RING	1 ST	D
2	R909831385	QUAD BONDET RING	3 ST	D
3	R909083758	O-RING	2 ST	D
4	R909152707	SEALING NUT	2 ST	D
6	R909152425	SEALING NUT	1 ST	D
7	R909086517	O-RING	1 ST	D
8	R909830129	O-RING	1 ST	D
9	R909083764	O-RING	1 ST	D
10	R909083763	O-RING	1 ST	D
11	R909083761	O-RING	1 ST	D
13	R902602257	SEAL RING	1 ST	
14	R902602578	O-RING	1 ST	

L = Assembly group D = Sealing element

Security notice

All service and repair work shall be executed by Bosch Rexroth AG or specially trained personnel. Bosch Rexroth AG does not cover defects caused by incorrect installation, faulty maintenance or repair from the buyer's side or third parties.

The data specified above only serve to describe the product. No statements concerning a certain condition or suitability for a certain application can be derived from our information. The given information does not release the user from the obligation of own judgement and verification. It must be remembered that our products are subject to a natural process of wear and aging.

Spare parts list

Part No.: R902095515
Drawing no.: R902095554
Designation: SEAL KIT PUMP SUPPORT PLATE

Bosch Rexroth AG
Service Hydraulics
Glockeraustrasse 4
89275 Elchingen
Germany
+49 (0)7308/82-2126

Status of version: 7/2014

Date: 19.08.2014
Page: 29

Pos.	Part No.	Designation	Quantity	
1	R909157351	O-RING	1 ST	D
2	R909157997	O-RING	1 ST	D
3	R909154589	O-RING	1 ST	D
4	R913002054	O-RING	1 ST	D
5	R909083832	O-RING	2 ST	D
6	R909086482	O-RING	1 ST	D
7	R909083831	O-RING	1 ST	D

L = Assembly group D = Sealing element

Security notice

All service and repair work shall be executed by Bosch Rexroth AG or specially trained personnel. Bosch Rexroth AG does not cover defects caused by incorrect installation, faulty maintenance or repair from the buyer's side or third parties.

The data specified above only serve to describe the product. No statements concerning a certain condition or suitability for a certain application can be derived from our information. The given information does not release the user from the obligation of own judgement and verification. It must be remembered that our products are subject to a natural process of wear and aging.